

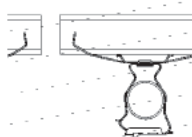
- Assemblies support 1/2", 3/4" and 1" conduit.
- W2 series attaches to 1/8" thru 3/8" flanges or #12 wire thru 1/4" plain or threaded rod.
- W6 series attaches to 3/8" thru 7/16" flanges or 3/8" plain or threaded rod.

Guide-Rite™ Conduit To Rod Fasteners



| UPC/Part Number | Catalog Number | Conduit Size EMT/Rigid | Box Qty. |
|-----------------|-------------------|------------------------|----------|
| 78101118540 | BG-8-12-W2 | 1/2", 3/4" | 100 |
| 78101118640 | BG-16-W2 | 1" | 100 |
| 78101195519 | BG-8-12-W6 | 1/2", 3/4" | 100 |
| 78101195520 | BG-16-W6 | 1" | 100 |

Patent #4958792



50 Lbs.

Static Load Capacity



25 Lbs.

Note: An independent means of support is required by NEC Article 300.11.

Read safety/installation instruction sheets in packages before use.